

Buckeye Partners

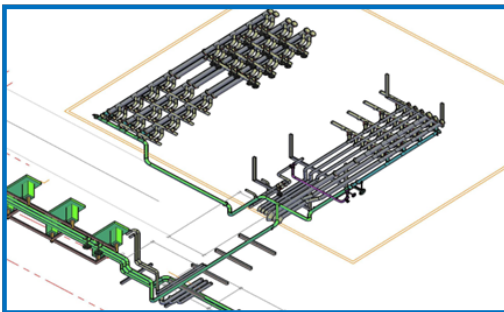
CORPUS CHRISTI TERMINAL – PIPING TIE IN TO EXPORT PIPELINE

CORPUS CHRISTI, TX | PROJECT COST: \$200,000 |
COMPLETED IN FEBRUARY 2016



S.T. HUDSON ENGINEERS, INC.

Professional Engineers and Consultants



PROJECT SUMMARY

S. T. Hudson Engineers, Inc. was selected by Buckeye Partners, L.P. to design the connection of the Buckeye Texas Processing tank fields to exporting pipelines operated by a third-party. We used state-of-the-art 3D laser scanning equipment to model the existing conditions and create accurate 3D models. Equipped with these 3D models, we were able to efficiently design the manifold connections, rack piping, and piping tie-ins with the fewest possible trips to the site.

PROJECT CONTACT

Nustar Energy
Mr. Brent Rathka
Project Engineer
Ph. (210) 918-2872
Brent.rathka@nustarenergy.com

PROJECT STATS

Three separate tank fields
Each tank field needed to span up to 1,500 feet to tie into exporting pipeline.

SERVICES

3D laser scanning of existing layouts
3D modeling of existing layouts
Manifold design of piping tie ins to export pipeline
Piping and pipe support design